

A decorative graphic consisting of multiple thin, black, wavy lines that flow from the top left towards the center of the page.

# **PROJECT PLAN STAGE**

**JORRIT LEYSEN**

A decorative graphic consisting of multiple thin, black, wavy lines that flow from the bottom right towards the center of the page.

# INHOUD

- 01** WIE
- 02** WAT
- 03** WAAROM
- 04** WANNEER
- 05** COMMUNICATIE
- 06** PLANNING

# WIE

## Website

<https://www.cmctelecom.be>

## Adres

Turnhoutsebaan 151, 2480 Dessel

## Contactpersoon

Bert

## Missie

- IT & Telecom begeleiden en ondersteunen
- Digitale transformatie veiligstellen

## Werknemers

~15

## Partners

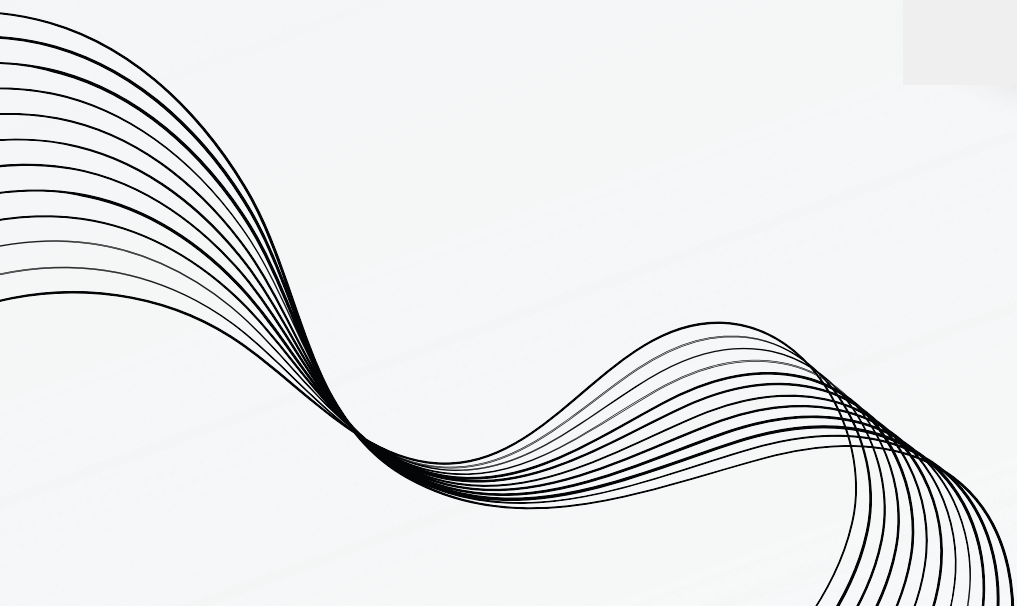
Proximus



# WAT

Choose your own device functionaliteit  
voor het klantenportaal in React  
(webshop)

Klanten geven hun werknemers een  
coupon om bepaalde producten te kopen



# WAAROM

**Aanbod**

Meer mogelijkheden voor klanten

**Verkoop**

Meer producten verkopen

**React**

Snelheid en flexibiliteit

# WANNNEER

week	starting		3e phase ITF
8	19/2	Preparation phase	Guidance presentation by the Internship coordinator + Guidance meeting with the Internship supervisor
9	26/2	Initiation phase	Internship 1
10	4/3		Internship 2: kick-off meeting
11	11/3		Internship 3
12	18/3	Realization phase	Internship 4: 1st meeting at school
13	25/3		Internship 5
14	1/4		Internship 6: intermediate internship evaluation
15	8/4		Internship 7
16	15/4		Internship 8: 2nd meeting at school
17	22/4		Internship 9
18	29/4		Internship 10
19	6/5		Internship 11
20	13/5		Internship 12: submit internship evidence documents for review
21	20/5		Internship 13
22	27/5		Internship 14 (only for students with 2ITF course) + final internship evaluation

# COMMUNICATIE

## Stagebegeleider

- Wekelijks verslag
- Onedrive
- Terugkommomenten

## Stagementor

- Wekelijks verslag
- Dagelijkse checks

# PLANNING

The image shows a Trello board for a project named "Stage CMC". The board is organized into five columns representing different stages of a workflow: Backlog, To Do, Doing, Testing, and Done. Each column has a header card with an emoji and a title. Below the headers are task cards. The "Backlog" column contains three cards, two of which are marked as "Question". The "To Do" column has one card. The "Doing" column has one card. The "Testing" column has one card. The "Done" column has four cards, each associated with a specific "Sprint 14" and day. A code snippet is overlaid on the board, showing a JavaScript conditional statement. The Trello interface includes a top navigation bar with "Workspaces", "Recent", "Starred", and "Templates" menus, a search bar, and a "Create" button. The board's name "Stage CMC" and a "Board" dropdown are visible at the top left of the board area.

```
} else {  
  
  //it scrolled out of view  
  t.appeared = false;  
  
};
```



**BEDANKT  
VOOR HET  
LEZEN**

